

THE WEEKLY RAINBOW

VOL 22 ISS. 15

GLOBAL WARMING, A REALITY, NOT A MYTH.

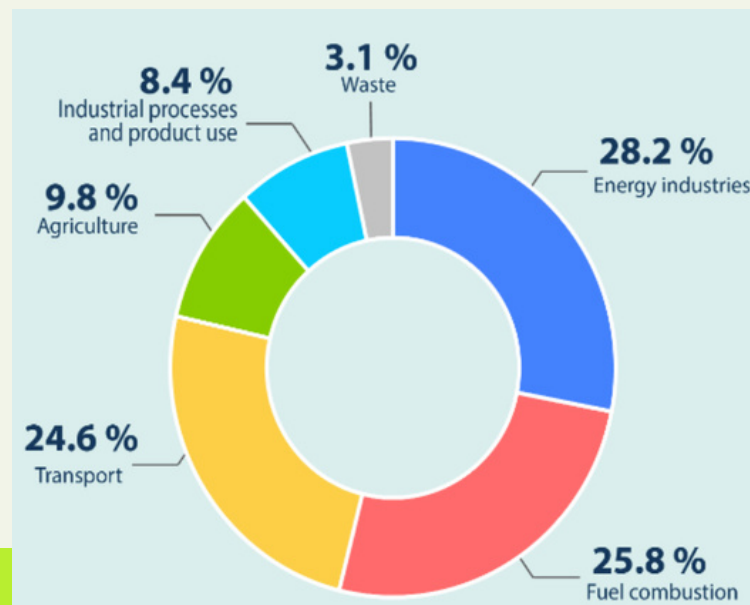
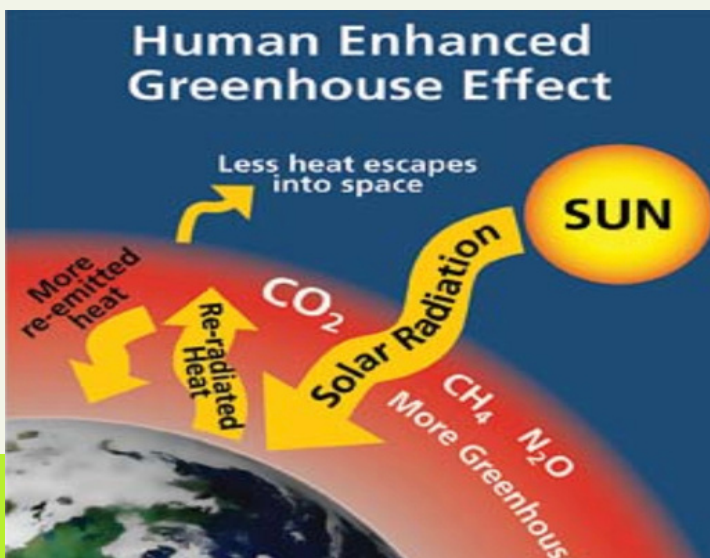
IN THIS WEEK'S ISSUE:

- GLOBAL WARMING
- PRIMARY
- GAMES
- QUOTE OF THE WEEK

Over the years, there has been discussion on whether global warming is a fact or a delusion. Global warming and the obvious climatic shift pose as one of the most contentious, ambiguous, and hotly contested occurrences in the world right now. This article demonstrates the reality of global warming at a local and national scale accompanied with its profound impact on us and our immediate environment, as well as the role that the Rainbow community can play to control it.

WHAT IS GLOBAL WARMING AND WHAT CAUSES IT?

It is the average increase in atmospheric temperature resulting from human activities. Human activities increase the amount of greenhouse gases in the atmosphere, which in turn absorb and re-emit heat back in to the lower atmosphere and on earth, causing warmer temperatures as shown below;



As a member of the Rainbow community, what can you do to support the campaign against global warming and climate change?

1. Reduce, Reuse, Recycle to cut down on energy consumption and emission of greenhouse gases from the manufacture and use of new products. This reduces on consumerism. Thumbs up to the Plastic Recycling Enrichment Club which is promoting this cause in Secondary school.
2. Encourage use of alternative renewable energy sources like Solar, Hydroelectricity, Geothermal power, etc.
3. Walk or cycle where possible to reduce on emission of greenhouse gases by vehicles.
4. Where possible use soft copies of work rather than hard copies.
5. Keep reusable bags on hand, and if you can't avoid plastic bags, be sure to recycle them.
6. Discourage all forms of water wastage in school and at home.
7. Join and support campaigns on afforestation and re-afforestation to increase on vegetation cover.
8. Cut meat intake (even one to two fewer servings per week adds up).

Scientists believe that taking on some of these sustainable methods of resource use at a local to national and international scale will help to cut down on greenhouse gas emissions, thus controlling global warming and climate change.

Geography Department.

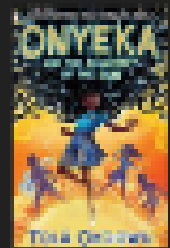
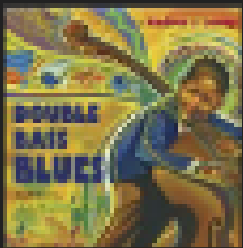


Primary Section

BOOKFLIX

Each week we will use this section to show you new books available in our primary library as well as what is popular right now with our primary children.

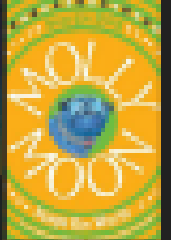
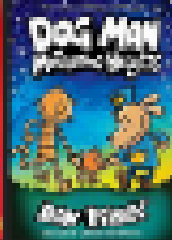
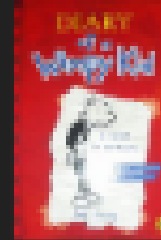
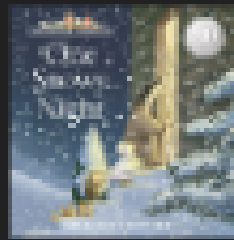
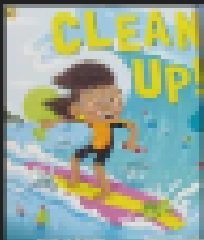
NEW RELEASES: PRIMARY LIBRARY



Suitable for age 2-7 years

Suitable for age 8-12 years

TRENDING NOW



PRIMARY STUDENT COUNCIL

WHAT ARE WE PLANNING?

This term, the Primary Student Council will be hosting a Valentine's Day event on...you guessed it...14th February! Primary children will be invited to pay 1000 UGX to come to school dressed in the colours of love (red, pink, purple, white). We will host a Valentine's-themed bake sale and will be asking for your support with donating love-themed cakes, cookies, pastries etc to sell at the Valentine's bake sale.

So far this academic year, we have already raised a whopping **1,245,200 UGX** from the Christmas Market and the non-uniform day in Term I! The team are busy deciding which areas of the school the spend the money on at the end of the year. Do you have any ideas?

MEET THE TEAM



Back row: Gael, Alba, Makayla, Helleina
Front row: Maiviki, Jayden, Nyla, Amelia (chairperson)

GAMES

1. *Is climate change caused by humans?*

Yes

No

2. *Which animals have died because of climate change?*

A. polar bears

B. monkeys

C. Monkeys

D. Bramble Cay melomys



3. *What colour are the stars on the American flag?*

4. *what is the capital of Ireland*

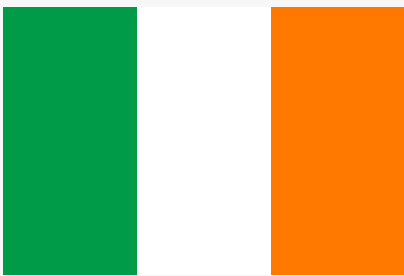
5. *what is the most expensive spice in the world?*

A. Chilli flakes

B. Bay leaves

C. Saffron

D. Oregano



6. *Who is Queen Elizabeth's oldest child?*

7. *Which country has won most of the world cups?*

A. Brazil

B. Portugal

C. Argentina

D. France



Please send your answers to quiz@risu.sc.ug by 4:30 PM
and the winner will receive a prize!

LAST WEEK'S

ANSWERS:

1) AFGHANISTAN

2) NEW CALEDONIA

3) USA

U	N	K	E	G	C	H	I	N	A	A	I	C	S
N	U	K	R	A	I	N	E	I	H	L	K	O	A
I	U	A	I	N	A	Z	N	A	T	G	S	N	U
T	G	L	I	H	K	D	I	I	L	E	P	G	D
E	A	D	N	A	U	U	A	R	I	R	I	O	I
D	N	E	I	N	A	R	I	N	D	I	A	S	A
K	D	A	N	I	G	E	R	I	A	A	D	P	R
I	A	R	N	E	A	P	D	U	U	C	N	A	A
N	A	I	S	Y	A	L	A	M	N	N	A	I	B
G	S	N	A	R	I	G	Z	R	D	B	L	N	I
D	A	N	S	A	A	M	R	U	B	S	I	G	A
O	A	A	N	I	T	N	E	G	R	A	A	N	N
M	I	E	A	N	A	H	G	N	I	A	H	I	A
N	U	I	A	L	S	N	I	D	A	A	T	A	I

QUOTE OF THE WEEK

***"YOU MUST BE THE CHANGE YOU WISH TO SEE IN
THE WORLD."***

-MAHATMA GHANDI